



Ford Ranger PX

MY2011 - 2022

Recovery Points

IMPORTANT! – READ BEFORE INSTALLATION

- This product must be installed exactly as per these instructions using only hardware supplied.
- Take a few moments to read instructions thoroughly before beginning work.
- In the event of damage to any component please contact OFFROAD ANIMAL to arrange repair/replacement of components.
- Do not use this product for any vehicle make or model other than that specified on these instructions.
- Do not remove labels from this product.
- This product and its fixings must not be modified in any way unless stated in these fitting instructions.
- The installation of this product is recommended for trained personnel.
- These instructions are correct at time of publication. OFFROAD ANIMAL cannot be held responsible for the impact of any changes subsequently made by the vehicle manufacturer. If you find something has changed please contact us to let us know!
- During installation it is the duty of the installer to check correct operation/clearances of all components.
- If Instructions are to be printed for reference in the workshop, it is recommended that they are printed in colour, for best legibility.

GENERAL CARE AND MAINTENANCE

Only wash the product with a PH neutral car wash to prevent paint damage and discolouration.

Plastic parts may be maintained with silicone spray.

Do not use acidic or alkaline based cleaning products.

It is important to perform regular checks (pre trip or on an annual basis) on the installed product. Checks include:

- Visual inspection for damage (eg. cracks, chips, dents etc.)
- Electrical wiring is not rubbing anything or worn out
- Bolts are torqued to correct specification (see torque guide below)

For touching up small stone chips, Offroad Animal recommends the following paint products:

- Dupli-Color Trim & Bumper Paint Black (TB101)
- VHT Hood, Bumper & Trim Paint Black (SP27)

BOLT TORQUE SETTINGS

Use the following bolt torques on all general fasteners, unless otherwise specified.

GENERAL FASTENERS	
Size	Torque Nm
M5	5 Nm
M6	9 Nm
M8	22 Nm
M10	44 Nm
M12	77 Nm

Use the following bolt torques on all structural front bar mount and tow point fasteners, and rear towbar fasteners, unless otherwise specified.

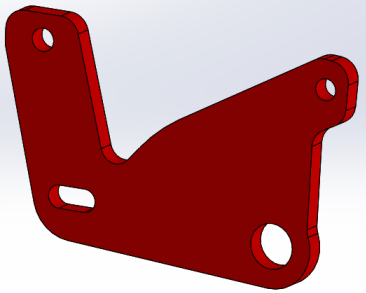
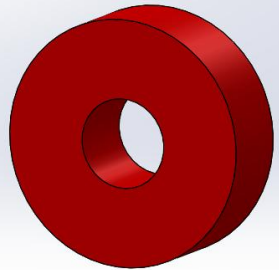
FRONT BAR MOUNTS AND TOW POINTS + REAR TOWBAR	
Size	Torque Nm
M10	57 Nm
M12	100 Nm
M14	164 Nm
M16	248 Nm

Always use a torque wrench to set correct torque settings. Ensure torque wrench is set to Nm unit of measurement. Otherwise perform conversion to lb-ft.

PARTS LISTING

IMPORTANT: Check all parts are present before beginning work! Contact OFFROAD ANIMAL if something is missing.

Main Parts – In the Box

Qty	Part Number	Description	Image
4	P-0023	Ranger tow point	
4	P-0024	Ranger Tow Point Spacer	

Small Parts – Contained in Small Parts Kit Bag

Qty	Part Number	Description
5	M12X65	Bolt Hex, M12X65x1.75, GR8.8 ZP
5	M12 FW	M12 FLAT WASHER
1	M12 FLANGE NUT	Flange Nut, M12x1.75 G8.8 ZP
4	NP-COM-M12-300-ASMO	M12 NUT PLATE 300MM STEM

TOOLS REQUIRED

The following tools will be required to install the product.

Hand Tools	Power Tools	Workshop Equipment
18mm Spanner 18mm Socket Ratcheting Socket Wrench	None	None

GENERAL WARNINGS

This tow point kit is designed to fit with the Offroad Animal Predator front bar.

The points MAY fit with other bar designs and will NOT fit with factory bumper.

These tow points are rated to 4T when used correctly. That is two points stacked together with Circular spacers and grade 8.8 bolts

It is always recommended to use an equalizing strap and pull from both LH and RH tow points at the same time during any recovery.

WORKSHOP SAFETY

It is the responsibility of the installer to always complete works in a safe manner. Make sure the following safety equipment is available and precautions are observed whilst fitting this product.

<p>Hearing Protection</p> 	<p>Always wear ear protection when using power tools.</p>
<p>Eye Protection</p> 	<p>Ensure eye protection is always worn when cutting or drilling.</p>
<p>Manual Handling</p> 	<p>Do not attempt to lift bar assemblies or rock sliders on your own.</p> <p>Always use two people to lift or use mechanical Lifting aid such as hydraulic lifting trolley.</p>
<p>Vehicle Support</p> 	<p>Always ensure vehicle is properly supported when working on it. Do not attempt to fit products whilst suspension work is being carried out. Do not work under a vehicle supported only by a jack.</p>



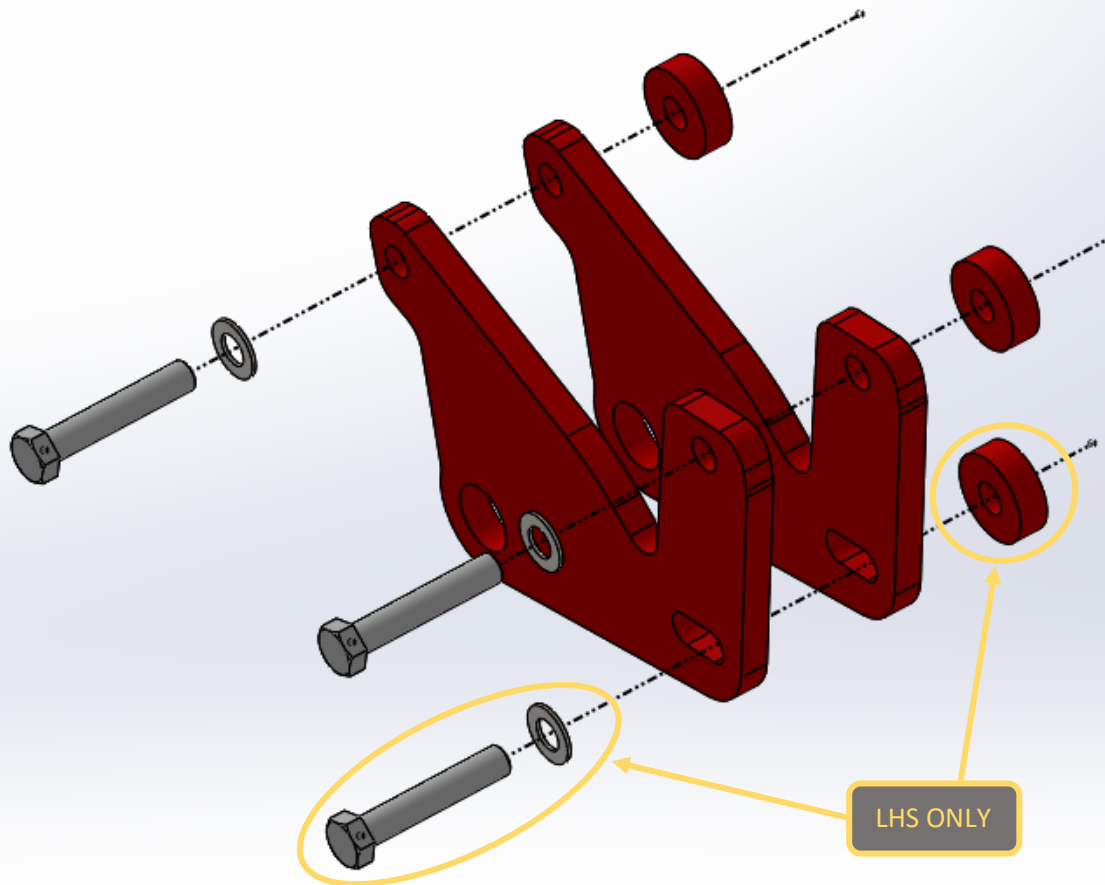
1. Remove the bumper and Impact beam of the vehicle.
2. Follow instructions from front bar fitting instruction with regards to removing the bumper.

TOOLS REQUIRED

Refer to Front Bar Instructions

FASTENERS

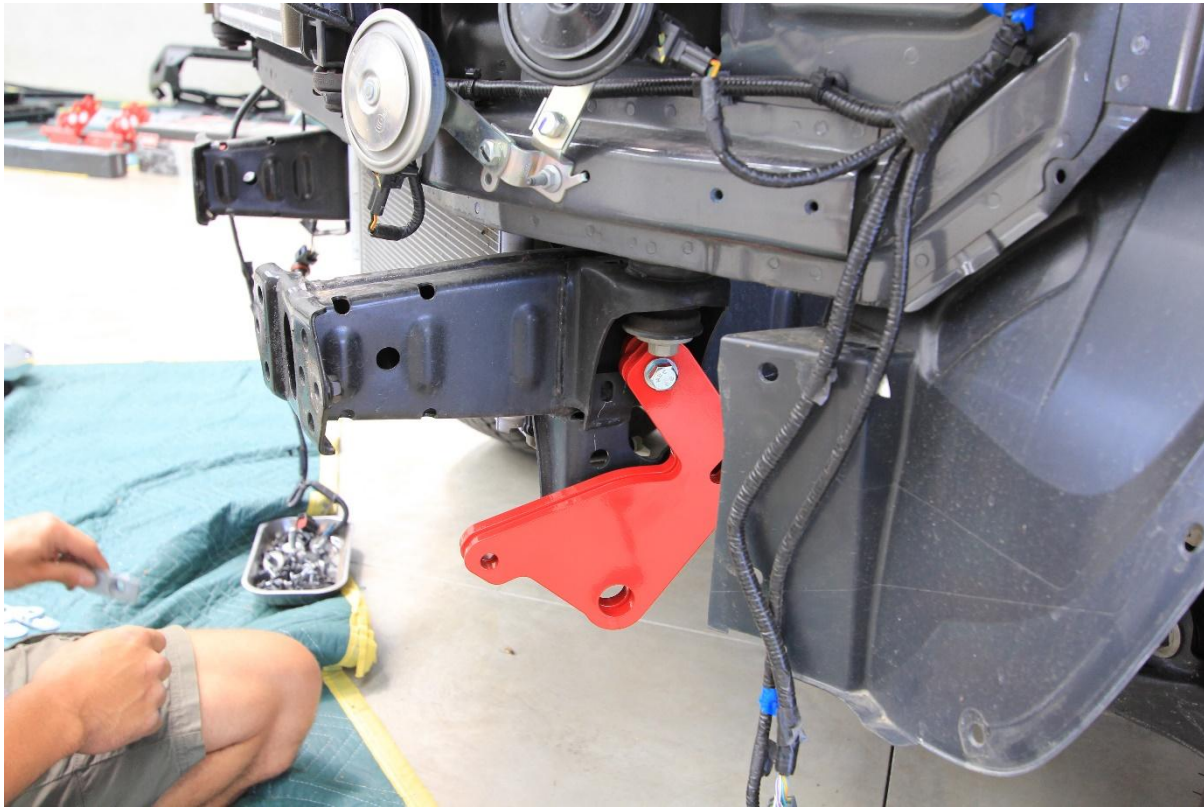
Refer to Front Bar Instructions



3. Stack Offroad Animal Tow points together as shown with M12x65 bolts and M12 flat washers.
4. Note that LHS is shown, RHS does not use lower Bolt or spacer.

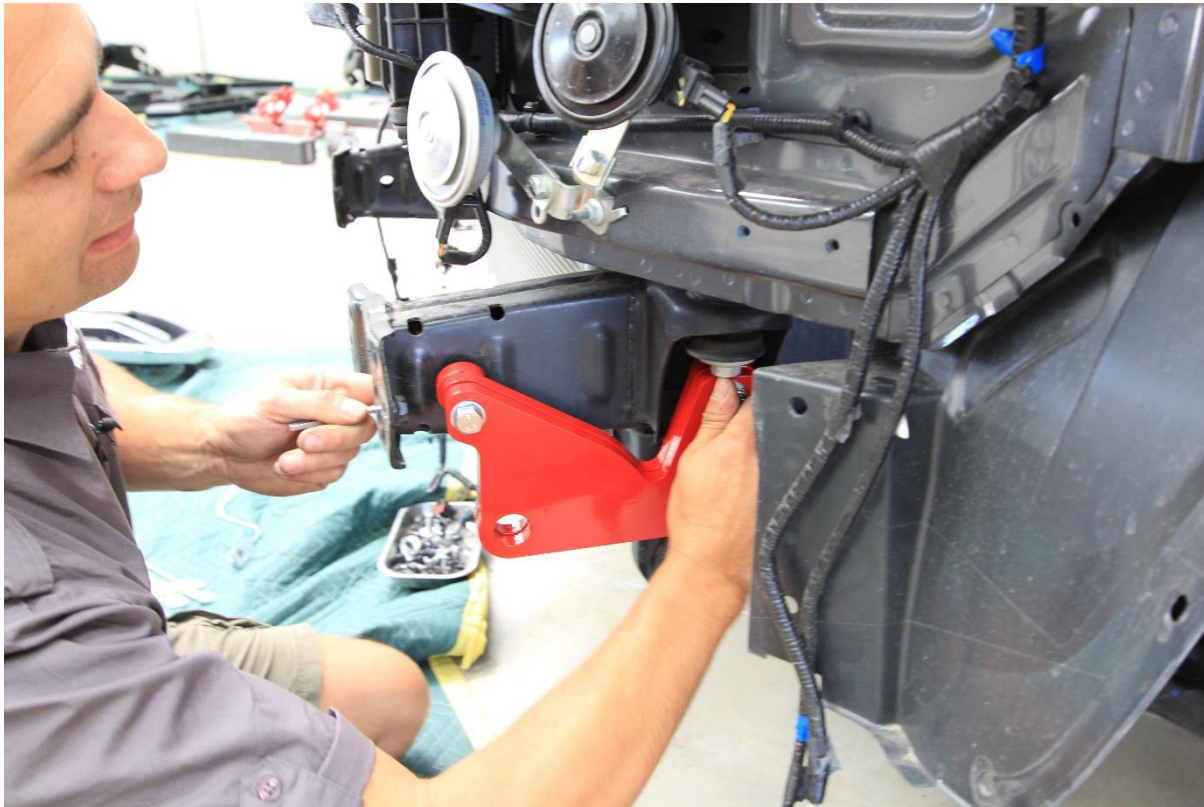
TOOLS REQUIRED**FASTENERS**

M12x65 hex bolt
M12 flat washer
P-0024 spacer



5. Place tow points onto chassis rail and insert bolts into holes.

TOOLS REQUIRED**FASTENERS**



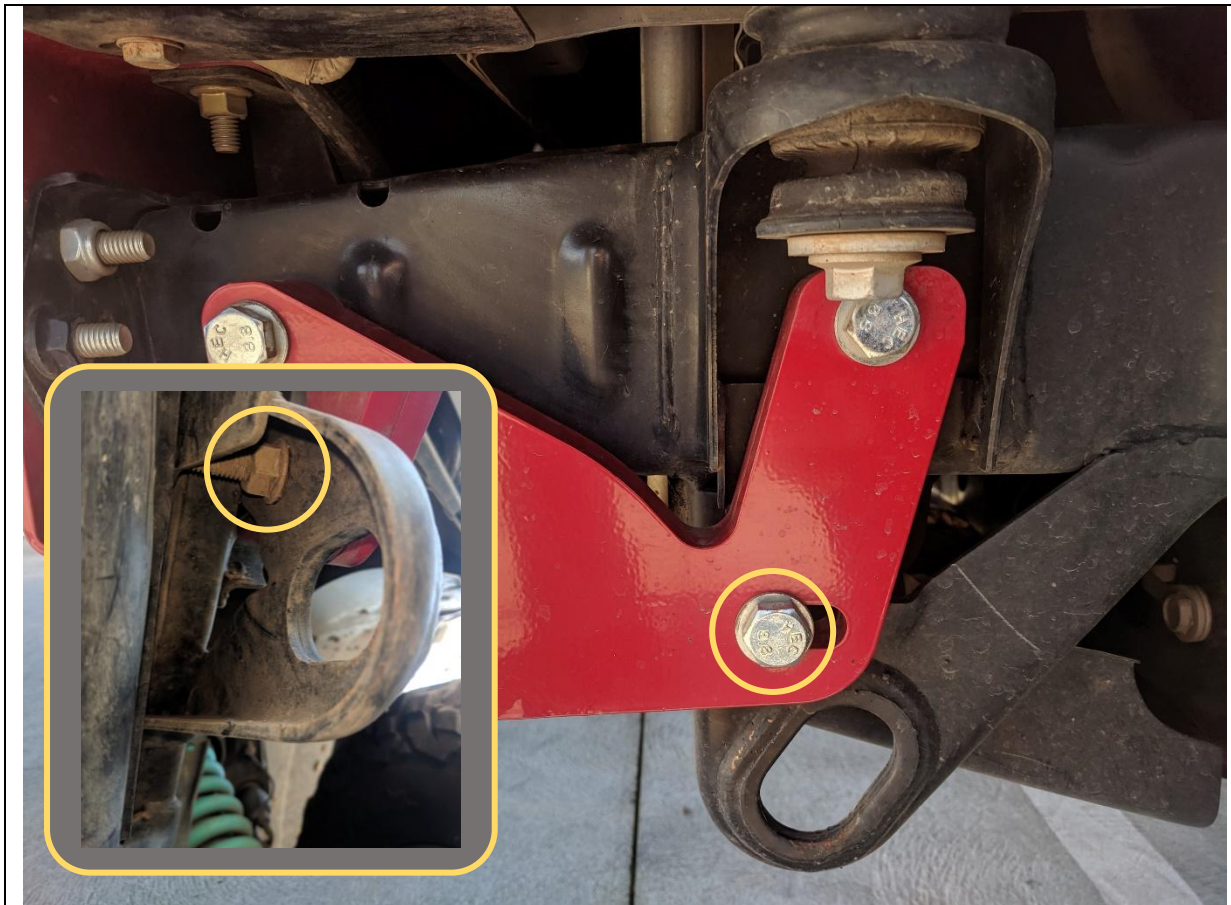
6. Secure using M12 nut plates, inserted from the front of the chassis. Once both bolts are secured tighten using 18mm spanner / Socket.
7. Repeat Steps 3 to 6 for other side of vehicle.

TOOLS REQUIRED

18mm Socket or Spanner

FASTENERS

M12 x 65 (4)
M12 Flat washer (4)
M12 Nut Plate (4)



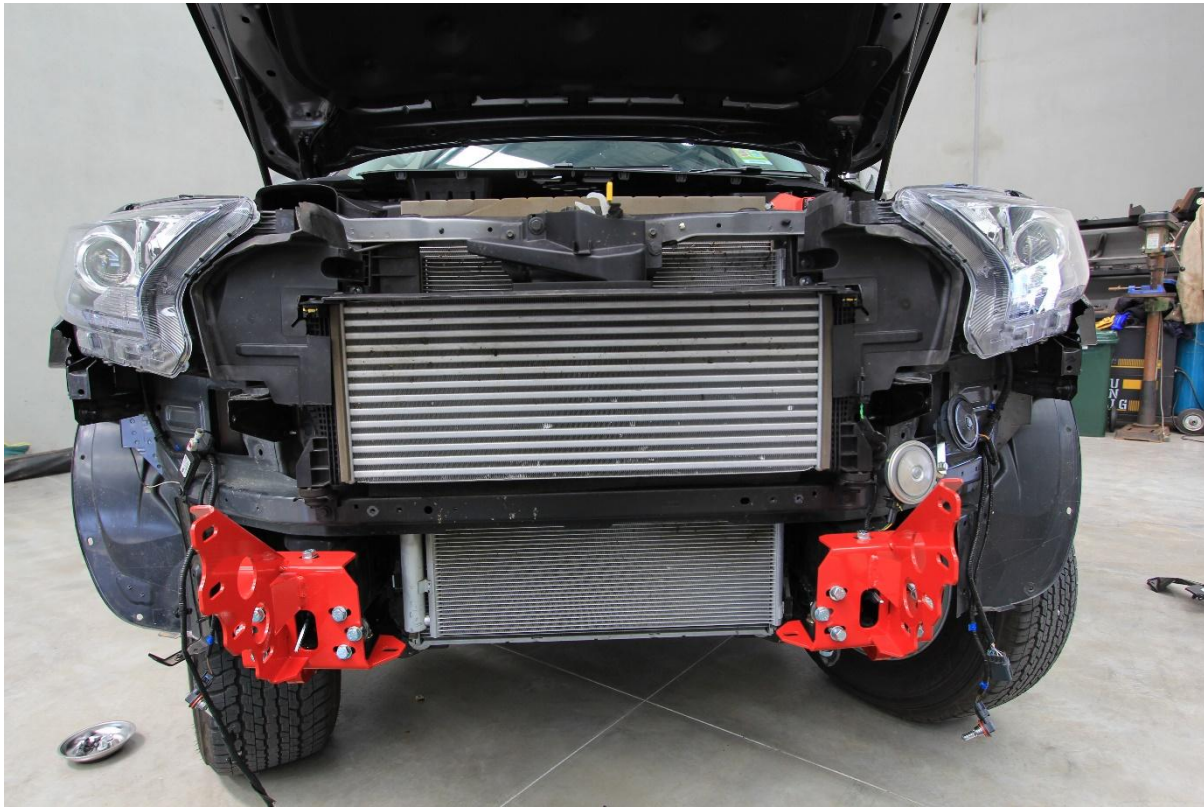
8. On LHS fit extra M12x65 Bolt, using the M12 Flange nut behind the factory tie down point as shown.

TOOLS REQUIRED

18mm Socket or Spanner

FASTENERS

M12 x 65 (1)
M12 Flat washer (1)
M12 Flange Nut (1)



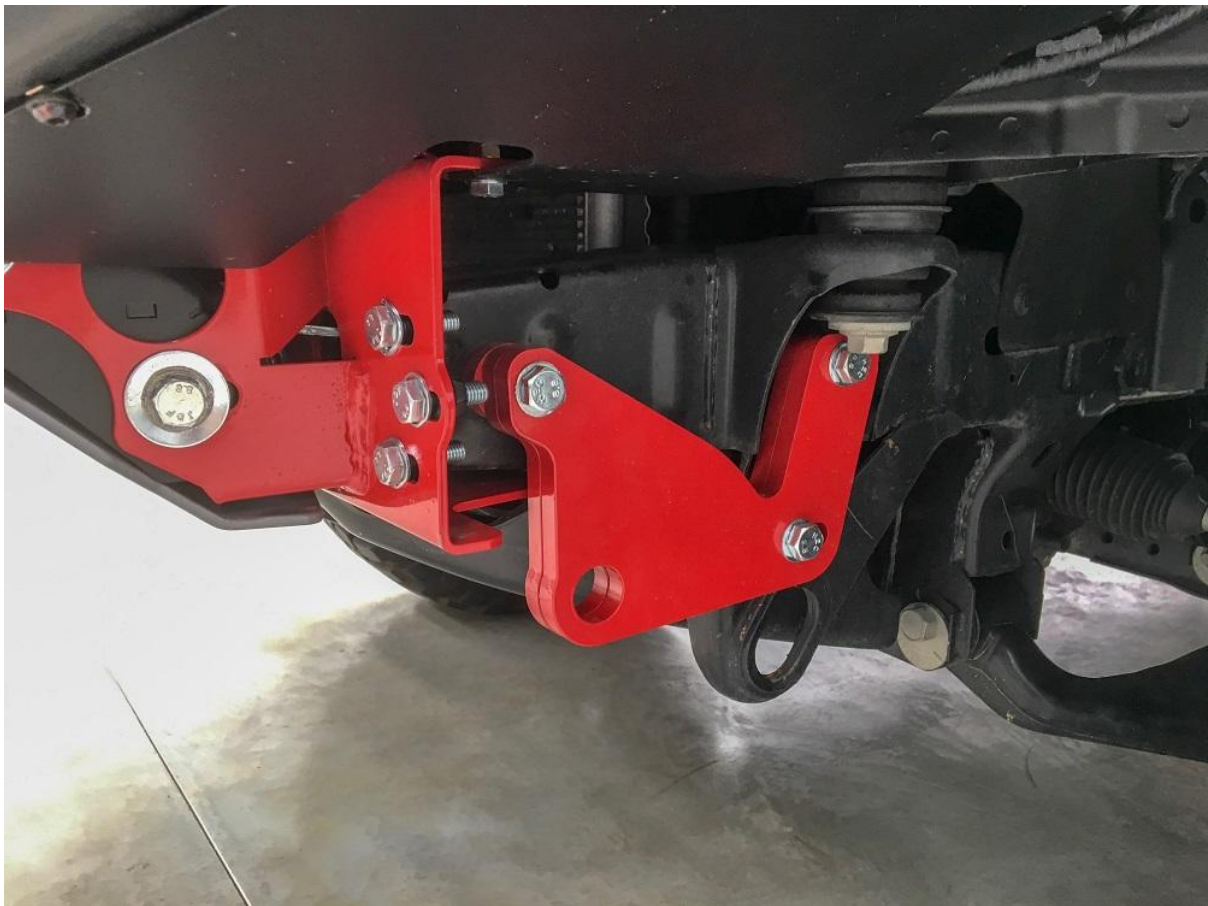
9. Continue installation of bar, following the bar fitting instructions.

TOOLS REQUIRED

Refer to Front Bar Instructions

FASTENERS

Refer to Front Bar Instructions



10. You're now done. Enjoy your new tow points and always pull from both points with an equalizing strap.

TOOLS REQUIRED**FASTENERS**